

		SHJ		REVISION RECORD				
		DATE	BY	REV	ECO	DESCRIPTION	DRFT	CHKD
△	DIMENSION MODIFY	11/22/03	Joke					
△	DIMENSION MODIFY	03/08/04	Joke	1				
△	DIMENSION MODIFY	03/18/04	Joke	2		DIMENSION MODIFY	IRONDR	03/18/02
△	DIMENSION MODIFY	03/20/04	Joke	3		ADD TYPE	XL	4/01/02
△	ADD TYPE	03/24/04	Joke	3		ADD TYPE	IRONDR	05/13/02
△	DRAWING MODIFY	03/30/04	Joke	4		ADD TYPE	IRONDR	06/13/02
△	ADD NEW P/N	SUNLL 07/10/04	yon	5		TYPE MODIFY	IRONDR	08/15/02
△	ADD NEW P/N	06/28/04	yon	6		ADD TYPE	IRONDR	09/11/02
△	ADD NEW P/N	SUNLL 09/16/04	yon	7		ADD TYPE	LFL	04/18/03
△	ADD NEW P/N	SUNLL 10/09/04	yon	8		DRAWING MODIFY	LFL	05/19/03
△	ADD LED TYPE	PETERS 11/3/04	PETERS	20		DRAWING MODIFY	PETERS	12/23/04
△				21		ADD LED TYPE	PETERS	01/15/05

**NOTES:**  
**ELECTRICAL:**

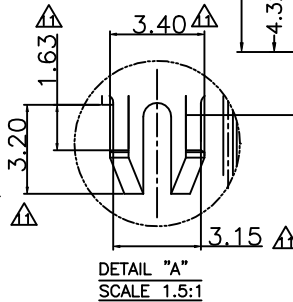
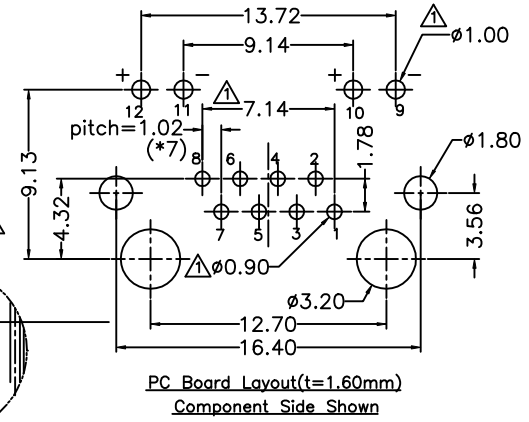
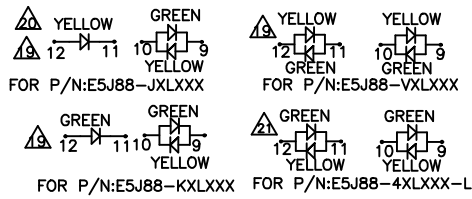
- VOLTAGE RATING : 125 VAC RMS.
- CURRENT RATING : 1.5 AMP.
- CONTACT RESISTANCE : 30 MILLIOHMS MAX.
- INSULATION RESISTANCE: 1000 MEGOHMS MIN @ 500 VDC.
- DIELECTRIC STRENGTH : 1000 VAC RMS 60Hz, 1MIN.
- LED RATINGS: FORWARD VOLTAGE: 2.2 VOLTS TYPICAL.  
REVERSE VOLTAGE: 5 VOLTS MINIMUM.
- OPERATING: 750 CYCLES MIN.

**MECHANICAL:**

- HOUSING MATERIAL : PBT+30%G.F OR FR52 UL94V-0. COLOR-BLACK.
- INSERT MATERIAL : PBT+30%GF OR FR52 UL94V-0. COLOR-BLACK.
- BACK PLATE MATERIAL : PBT+30%GF OR FR52. COLOR-BLACK.
- LED SIZE : 3.2\*2.0\*7.0\*P=2.54mm.
- SHIELD MATERIAL : COPPER ALLOY 0.25mm THICKNESS PLATING NI.
- CONTACT MATERIAL : PHOSPHOR BRONZE 0.35mm THICKNESS OR Ø0.46.
- PLATING : GOLD PLATING OVER NICKEL.
- PCB RETENTION PRE-SOLDER : 1 LB MIN.
- PCB RETENTION POST-SOLDER : 10 LBS MIN.

**ENVIRONMENTAL:**

- STORAGE : -40°C TO +85°C.
  - OPERATION: -40°C TO +85°C.
- MATES WITH MODULAR PLUG CONFORMING TO FCC PART 68, SUBPART F.  
CUL FILE No:E163191



LEAD FREE PART NUMBER: E 5J 8 8 - X X L X X X-L

- 1-LED1:GREEN ,LED2:YELLOW
- 2-LED1:GREEN ,LED2:GREEN
- 3-LED1:YELLOW ,LED2:GREEN
- 4-LED1:G+Y ,LED2:G+Y
- 5-LED1:RED ,LED2:GREEN
- 7-LED1:YELLOW ,LED2:YELLOW
- J-LED1: G+Y ,LED2:YELLOW
- E-LED1:GREEN ,LED2:RED
- K-LED1:G+Y ,LED2:GREEN
- V-LED1:Y+G ,LED2:Y+G
- 1-NO TAB
- 2-TOP TABS
- 3-SIDE TABS
- 4-TOP TABS & SIDE TABS

- PLATING:1-3u" 2-6u" 3-15u" 4-30u" 5-50u"
- 1-Plate Tin shield stamp pin,led long 7.0mm
- 2-Plate Ni shield stamp pin,led long 7.0mm
- 3-Plate Tin shield round pin,led long 7.0mm
- 4-Plate Ni shield round pin,led long 7.0mm
- 0-W/O LOGO PBT+30%
- J-W/O LOGO FR52
- 2-W/ "FRE" LOGO
- 5-W/O LOGO W/O TINNED SHIELD LEGS

W/TIN PART NUMBERS 5J 8 8 - X X L X X X

- 1-LED1:GREEN ,LED2:YELLOW
- 2-LED1:GREEN ,LED2:GREEN
- 3-LED1:YELLOW ,LED2:GREEN
- 4-LED1:G+Y ,LED2:G+Y
- 5-LED1:RED ,LED2:GREEN
- 7-LED1:YELLOW ,LED2:YELLOW
- J-LED1:G+Y ,LED2:YELLOW
- E-LED1:GREEN ,LED2:RED
- K-LED1:G+Y ,LED2:GREEN
- V-LED1:Y+G ,LED2:Y+G
- 1-NO TAB
- 2-TOP TABS
- 3-SIDE TABS
- 4-TOP TABS & SIDE TABS
- PLATING:1-3u" 2-6u" 3-15u" 4-30u" 5-50u"
- 1-Plate Tin shield stamp pin,led long 7.0mm
- 2-Plate Ni shield stamp pin,led long 7.0mm
- 3-Plate Tin shield round pin,led long 7.0mm
- 4-Plate Ni shield round pin,led long 7.0mm
- 0-W/O LOGO PBT+30%
- J-W/O LOGO FR52
- 2-W/ "FRE" LOGO
- 5-W/O LOGO W/O TINNED SHIELD LEGS

MM (INCH)		DFTO CZH	DATE 12/21/01	FULL RISE ELECTRONIC CO., LTD	
TOLERANCES EXCEPT AS NOTED		CHKD JMK	DATE 2005/1/15	TITLE	
		MFO	DATE	RJ45 SIDE ENTRY LED JACK	
		APPLUSHENG	DATE 2005/1/15	DRAWING NO. GE5J3015	
		MATERIAL :		SIZE A3	
ANGLES ±		QT'Y :		REV 21	
THIRD ANGLE PROJECTION		FINISH :		/PART NO. SEE NOTE	
		SCALE : 3:1		DO NOT SCALE DRAWING	
				SHEET 1 OF 1	